



Multimodal Ticketing Applications

Part of the Solution for future public transport?

Public Transport | Current Challenges

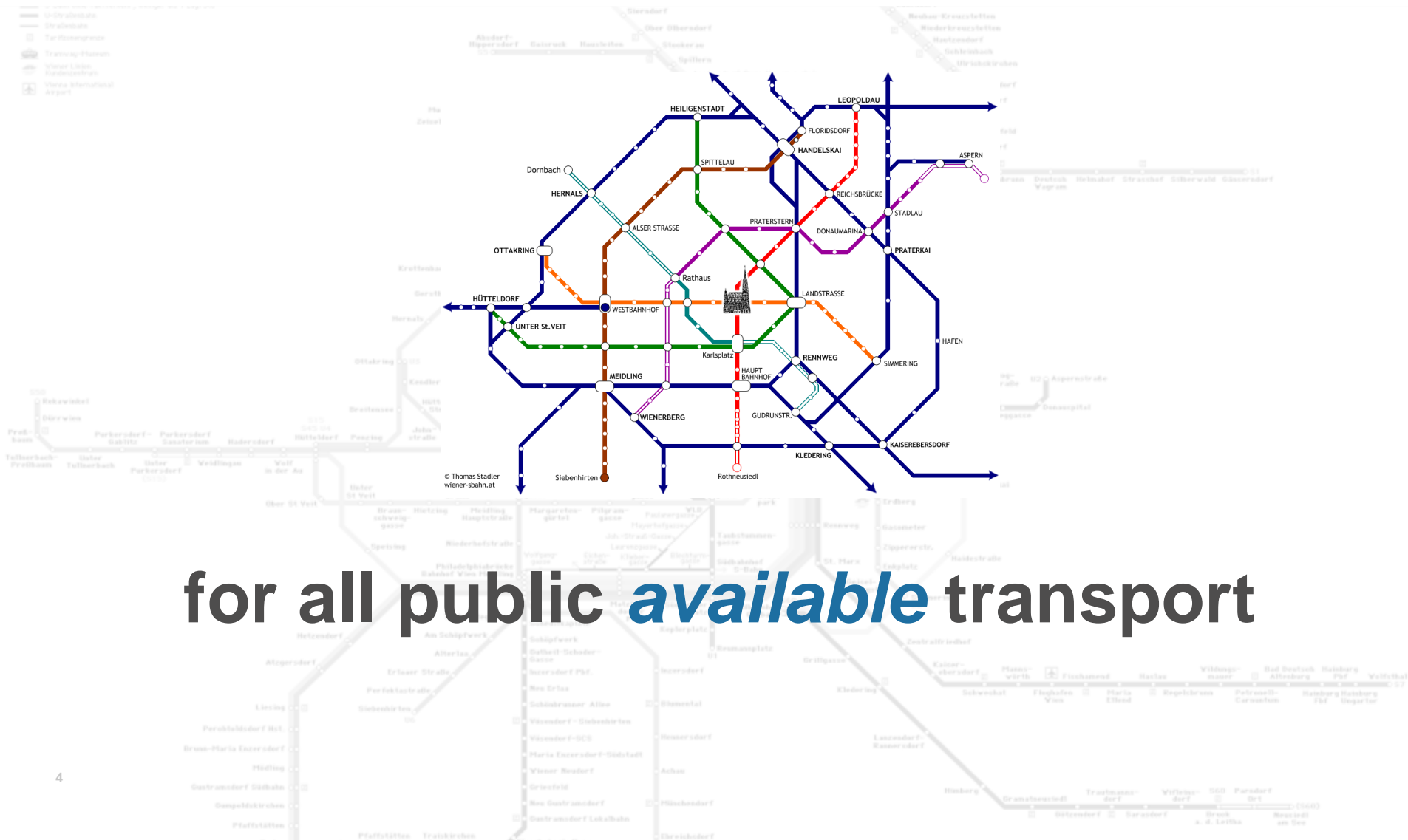


Public Transport | needs a new role...

More people, more devices, more transportation modes, more business models, more...

But which services do we need to address future challenges?

Public Transport | organises the urban guidance system



for all public *available* transport

Public Transport | provides realtime & disruption information



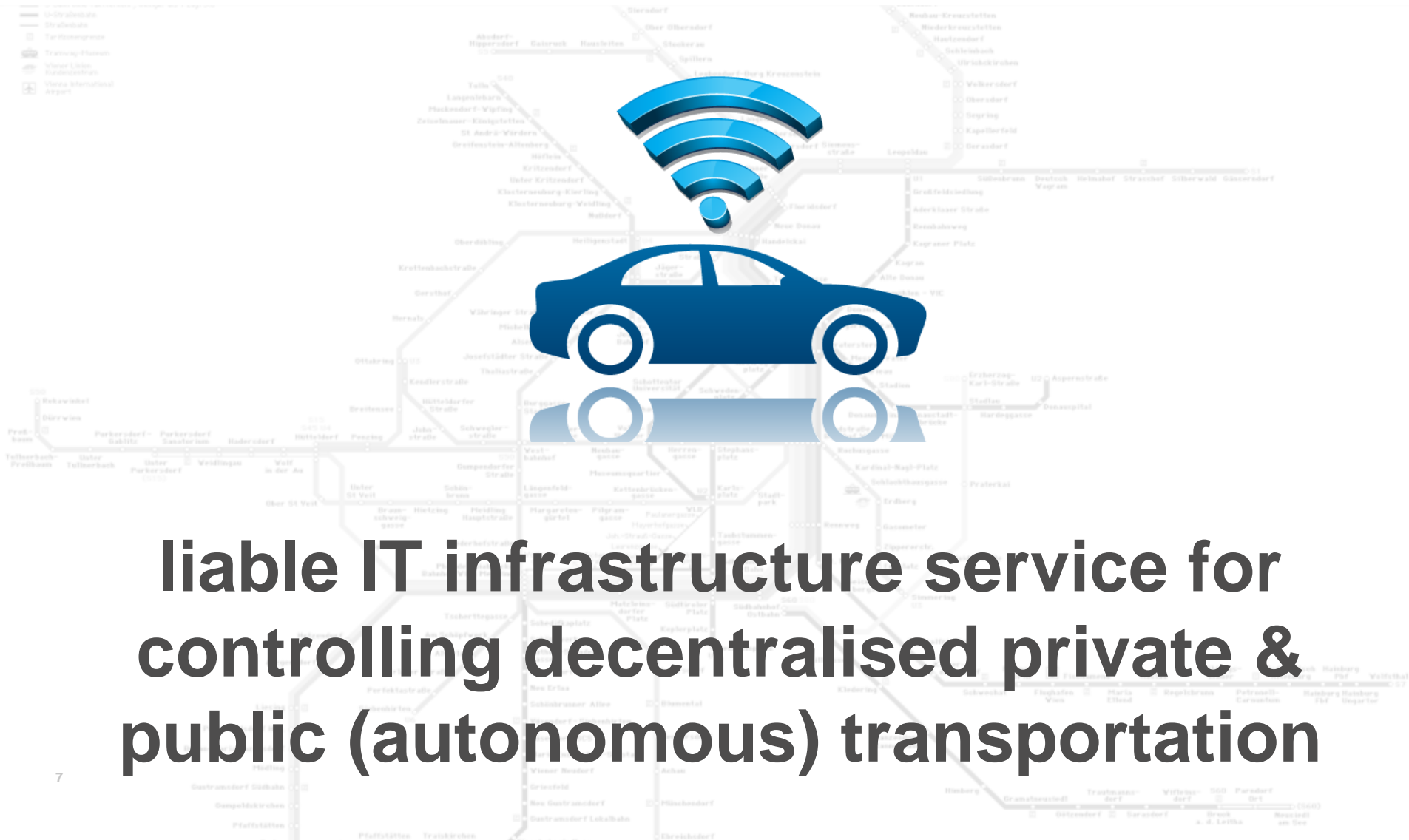
Linie	Fahrziel Destination	Abfahrt (min) Departure	Von From
67	Otto-Probst-Platz	2	A
67	Kurzentrum Oberlaa	3	B
7A	Philadelphialbrücke S U	2	C
65A	Business Park Vienna Inzersdorf Zetschegasse	3	C
66A	Liesing S	5	D
67A	Birostraße	7	D
70A	Richard-Tauber-Gasse	8	D

for all public *available* transport

Public Transport | for trusted central billing of all services



Public Transport | is public owned organiser and operator of



**liable IT infrastructure service for
controlling decentralised private &
public (autonomous) transportation**

Public Transport | enables private business development

user



startup



business



corporate



BEAM - Open Integration Infrastructure
(Registration, Information, Routing, Booking, Payment)

**Mobility
Provider**

**Routing
Provider**

**Payment
Provider**

**Service
Partner**

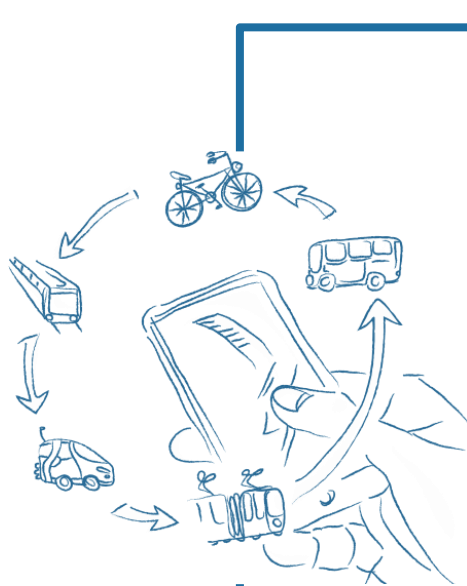
...



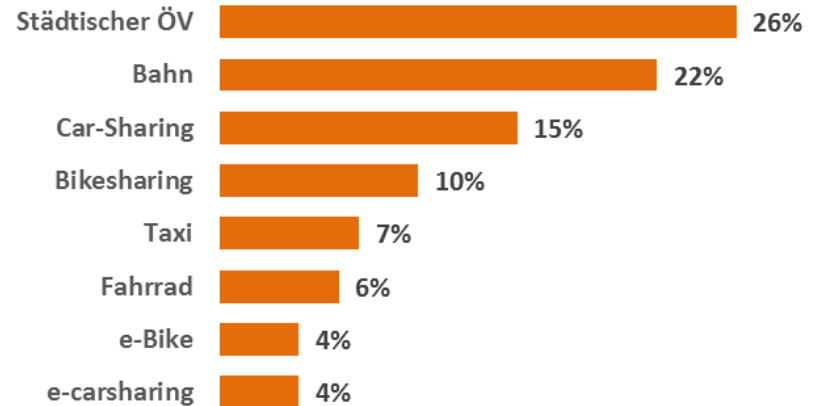
Beam 
Beta

the prototype that turns ideas into service

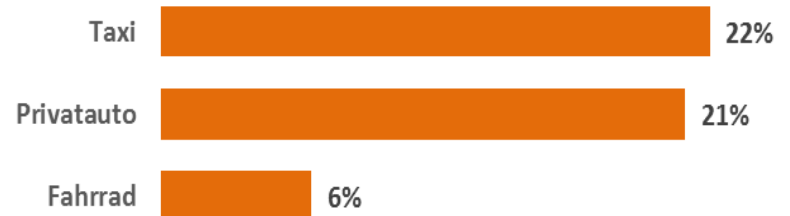
BeamBeta | Community is using more often PT and Sharing



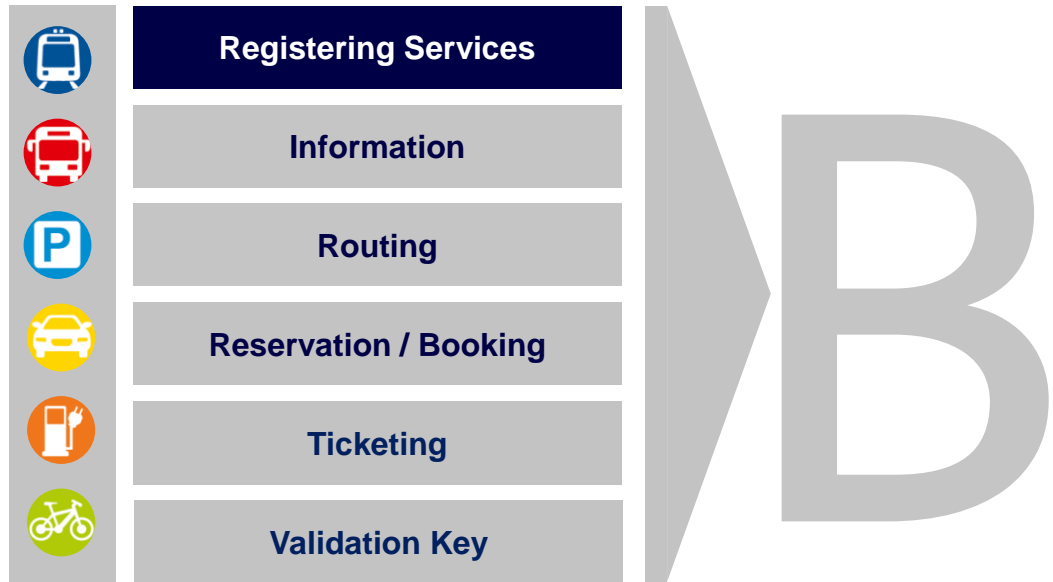
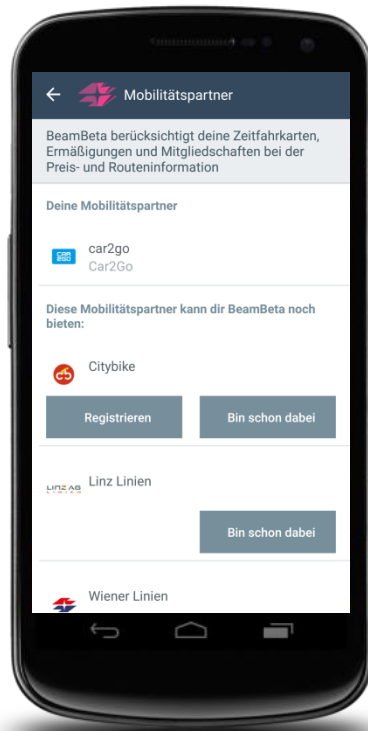
using more



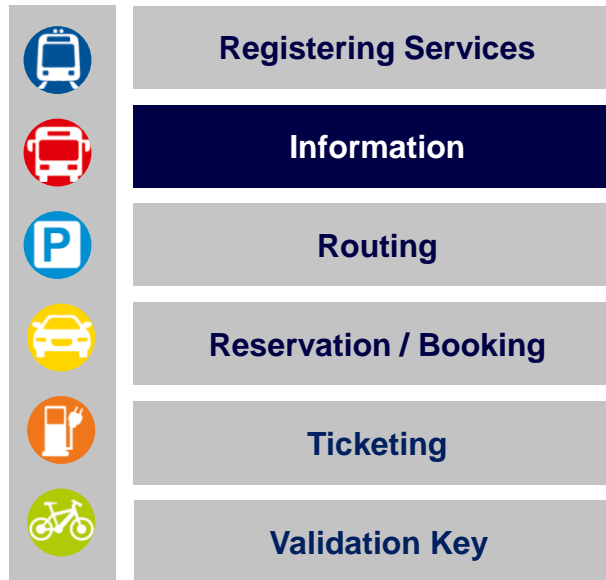
using less...



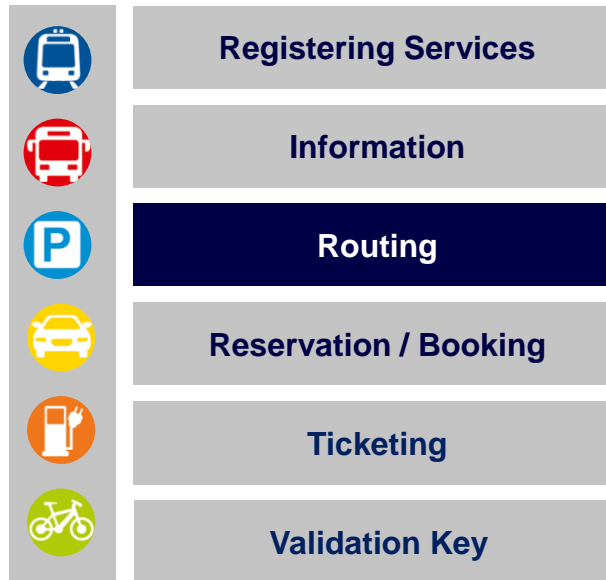
BeamBeta Community App: Function Overview



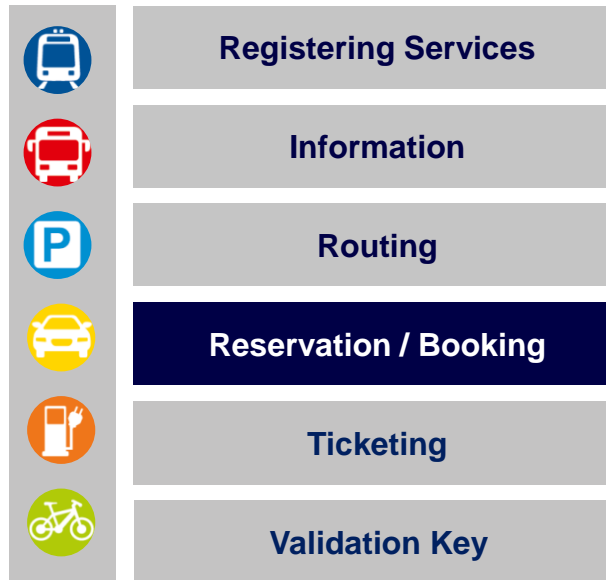
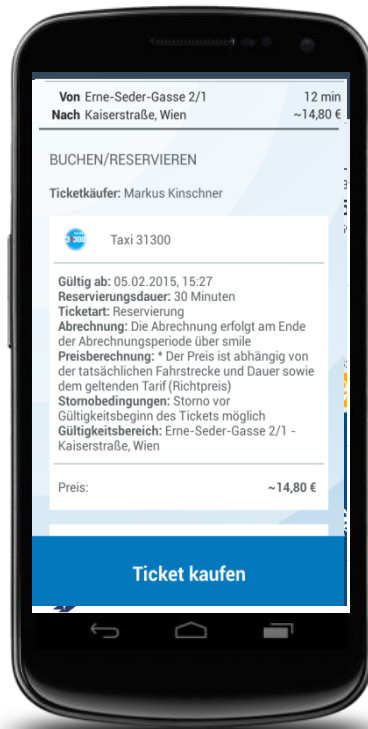
BeamBeta Community App: Function Overview



BeamBeta Community App: Function Overview



BeamBeta Community App: Function Overview



BeamBeta Community App: Function Overview



Registering Services

Information

Routing

Reservation / Booking

Ticketing

Validation Key



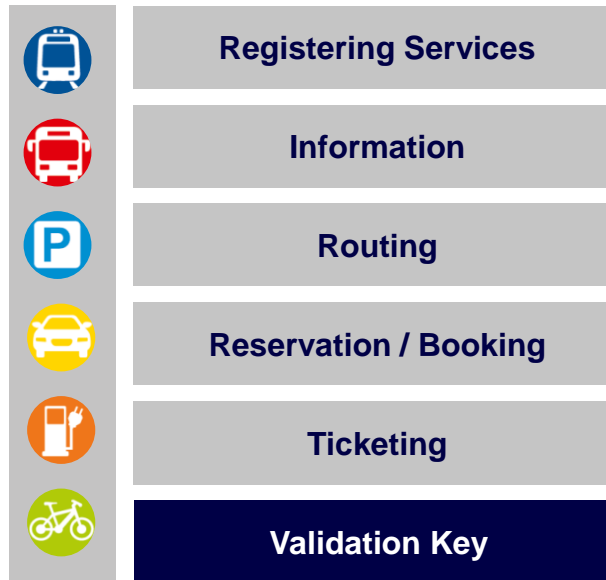
WIENER LINIEN



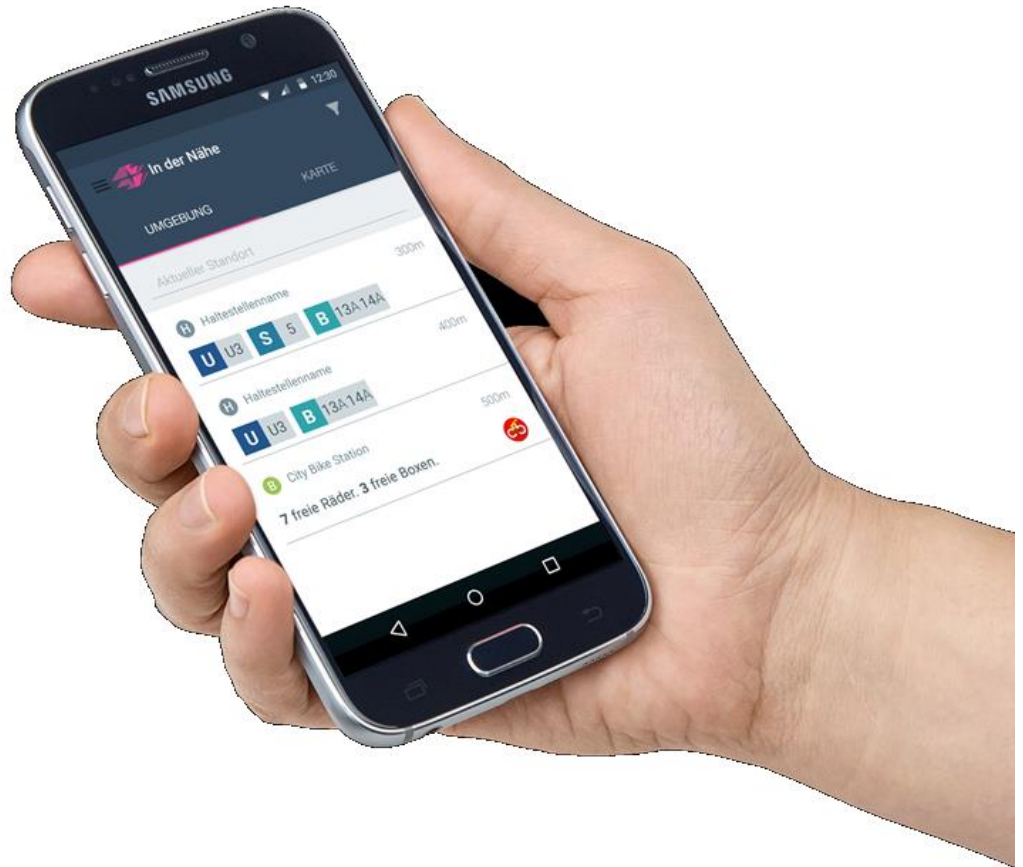
WIPARK

BeamBeta Community App: Function Overview

A



Beam Beta



www.beambeta.at

reinhard.birke@wienersadtwerke.at