



Hewlett Packard
Enterprise

Unlock Data with AI and Analytics

David Lazzerini
CTO HPE Suisse Romande

March 7th

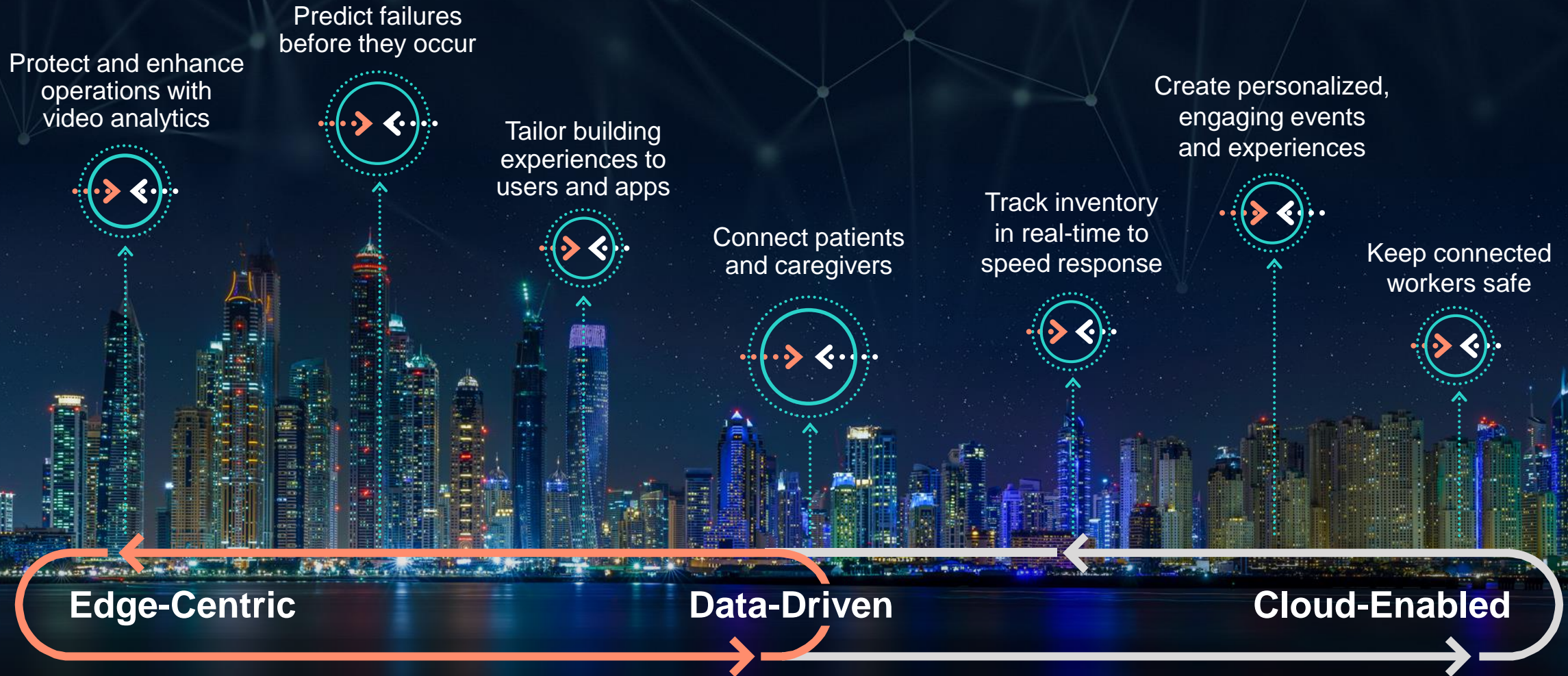




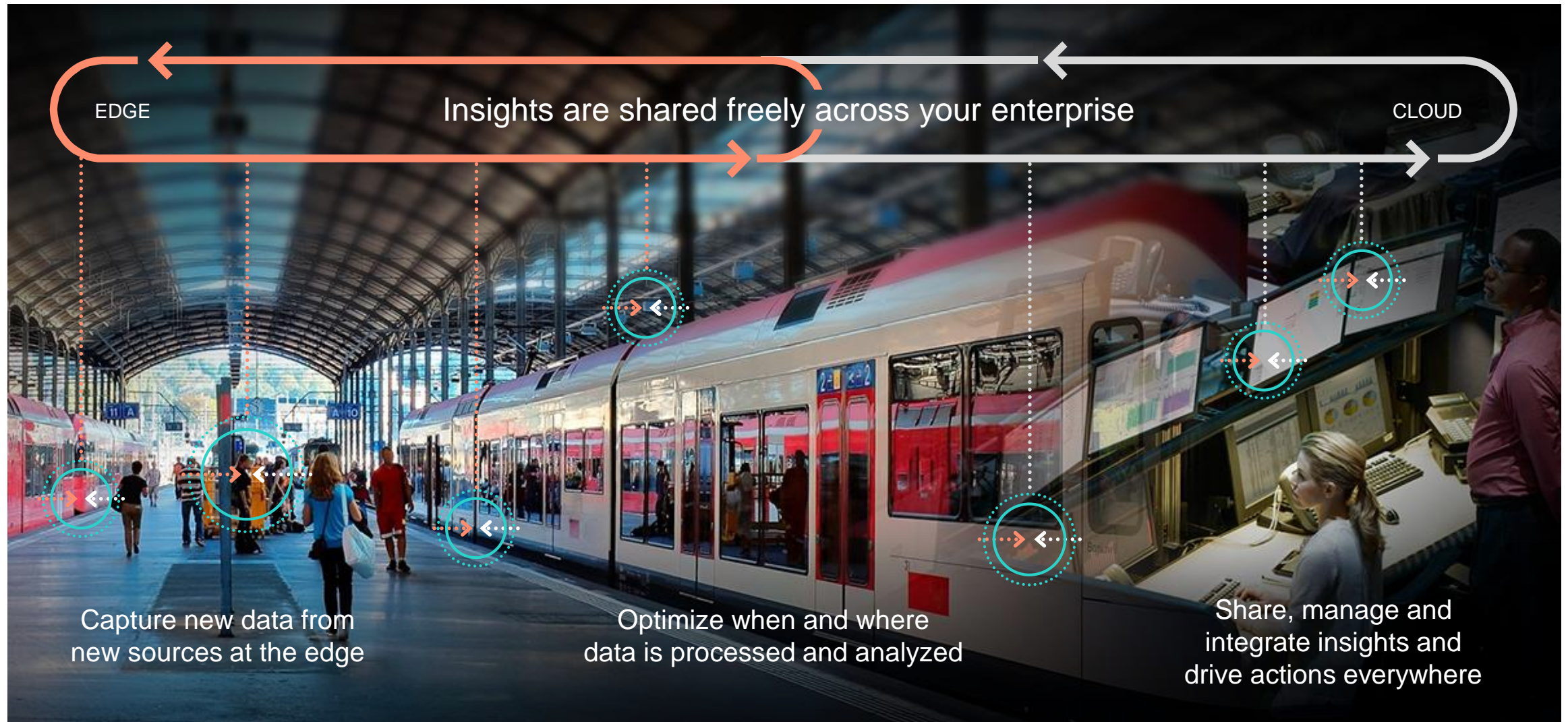
Data can transform businesses

Unlocked through AI and advanced analytics

Redefine experiences and create smarter operations



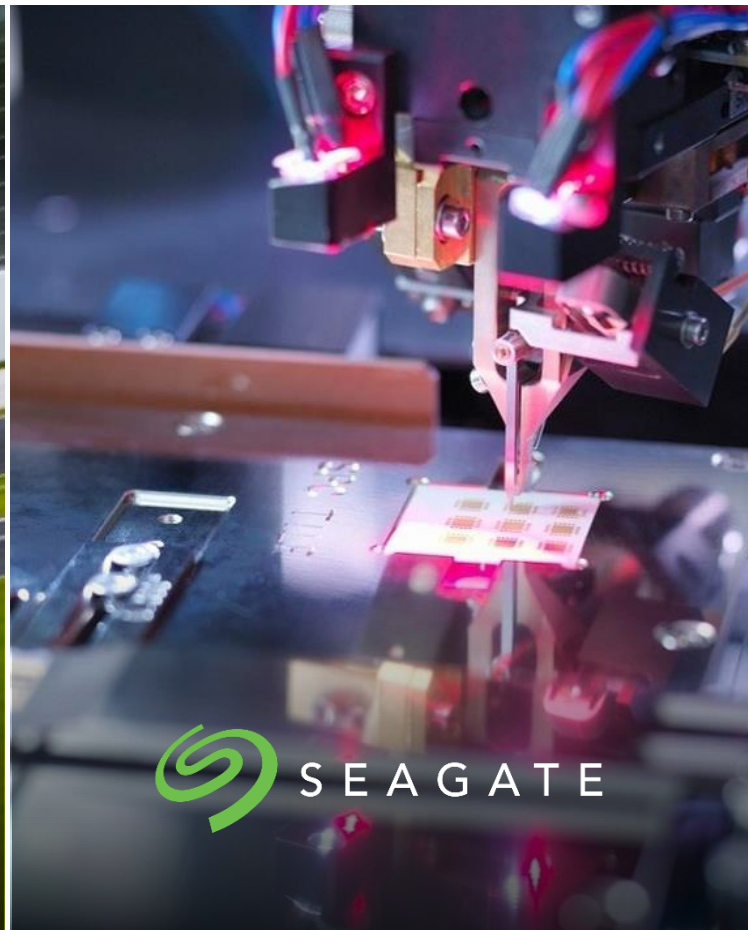
Creating a better digital foundation



HPE is making AI enterprise-grade



Using AI to perfect race strategy



Converging AI, IT and OT
to boost output and quality



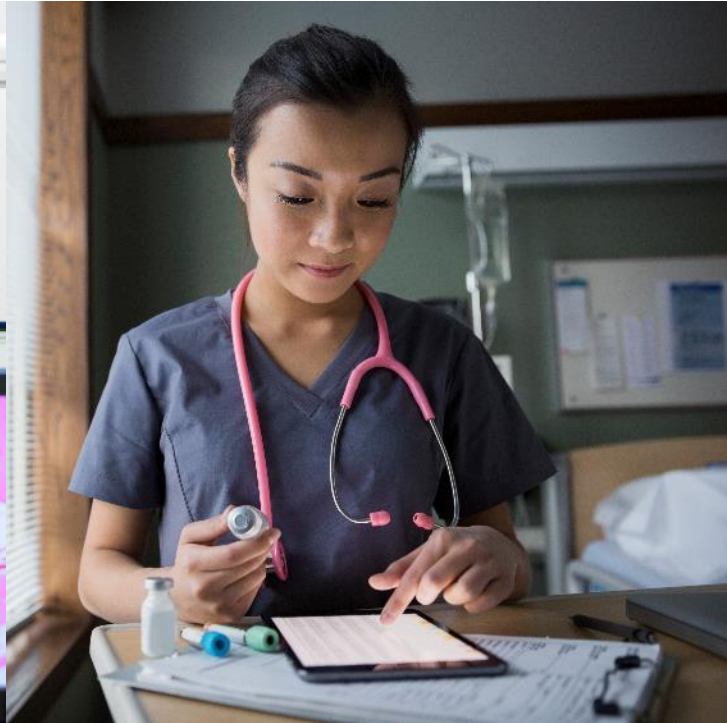
Accelerating Alzheimer's research
100x using in-memory analytics

Prepare for the connected health & wellness world

where everything cares



Technology will be
embedded everywhere

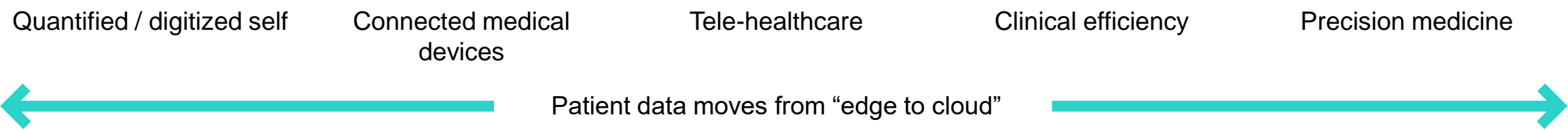
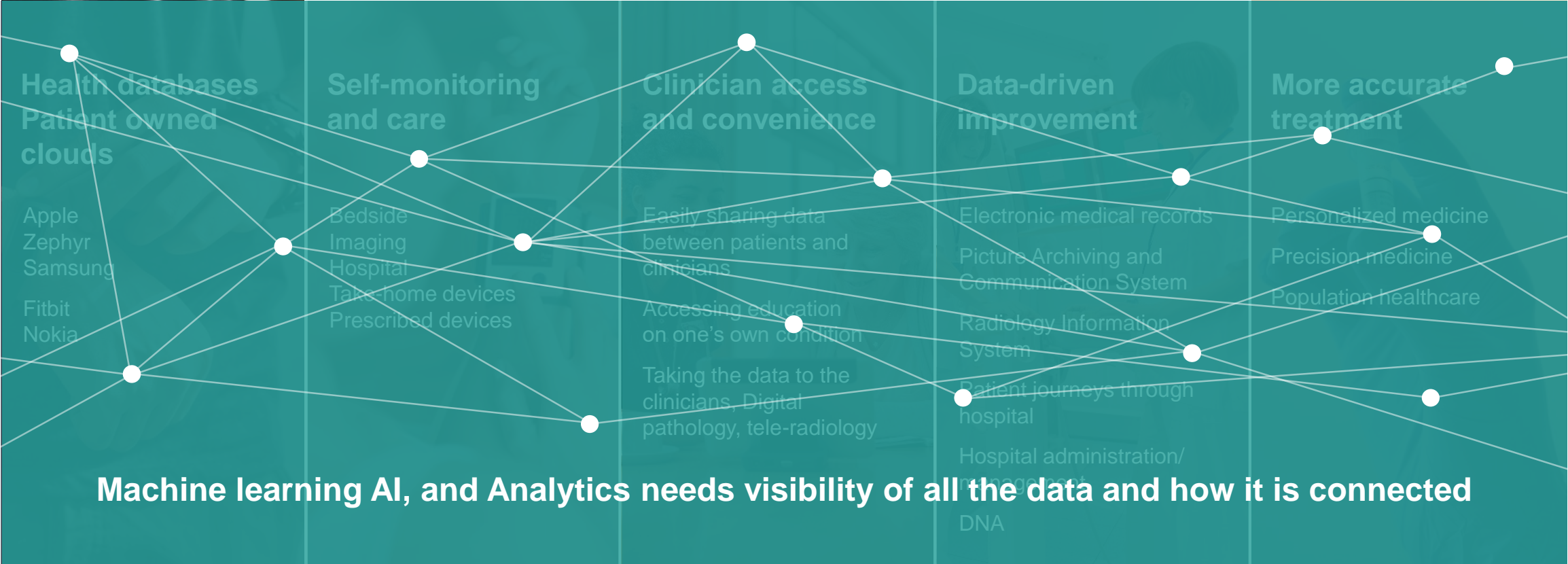


Everyone and everything
will be connected
– and learning



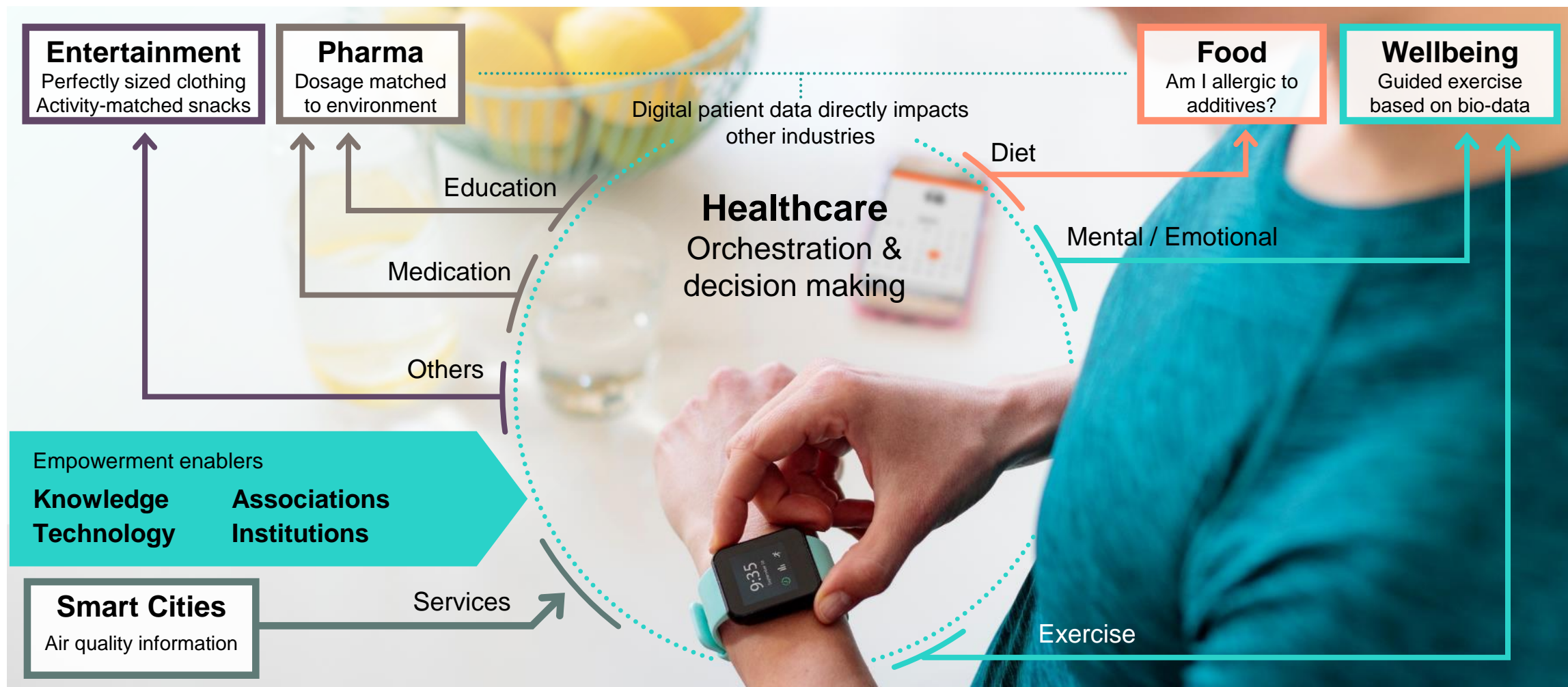
Everything
will be understood

Digitally disrupting healthcare



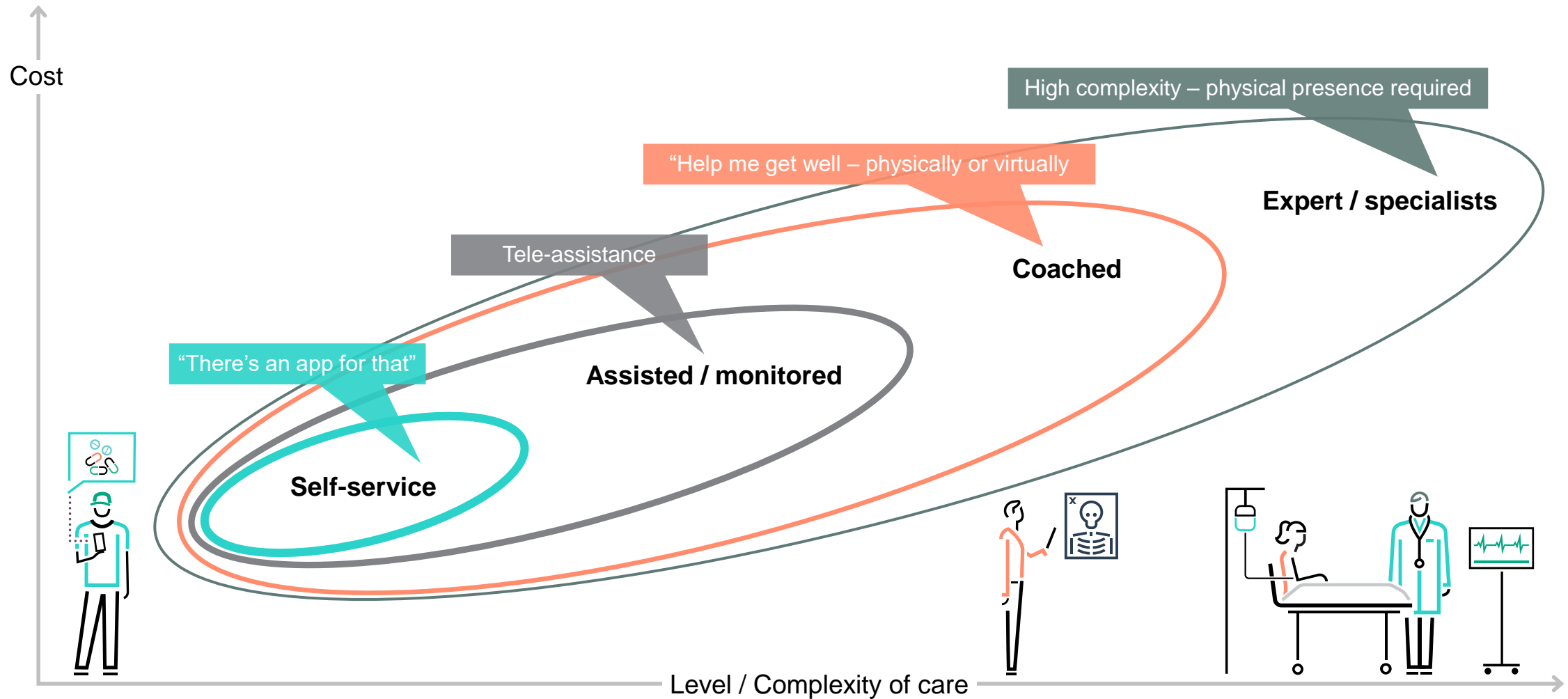
Empowered patient orchestrates personal health & wellbeing

Broad fabric of industries to interconnect



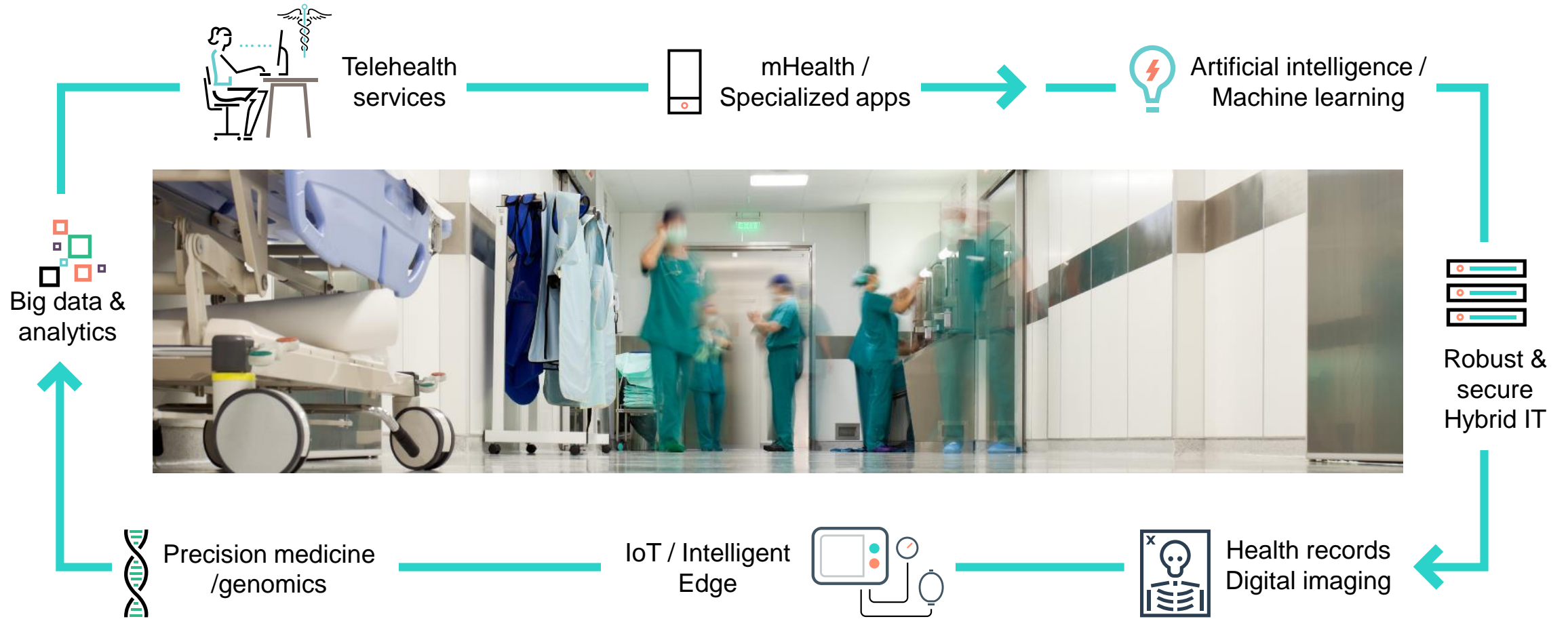
The new style of healthcare

Empowered patients and supportive clinicians collaborate closely

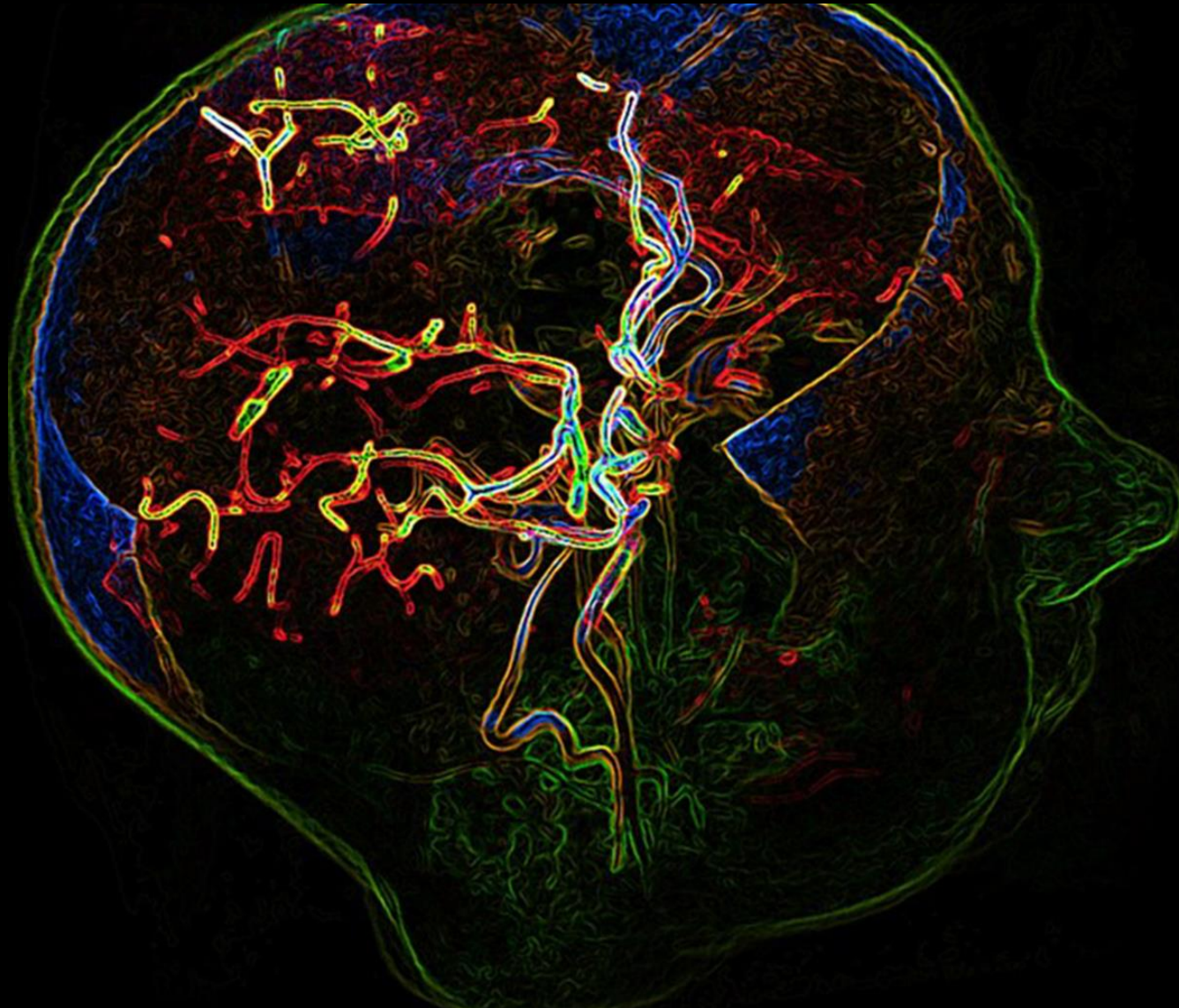


Technology enablers

It is IT that enables the New Care Continuum!



Memory-Driven Computing helps outpace the global time bomb of neurodegenerative disease



DZNE discovered HPE's Memory-Driven Computing — and saw unprecedented computational speed improvements that hold new promise in the race against Alzheimer's

60%

power reduction
cuts research costs

101x

increase in analytics speed blasts
research bottlenecks, leading to
shorter processing time —
from 22 minutes to

13_{seconds}